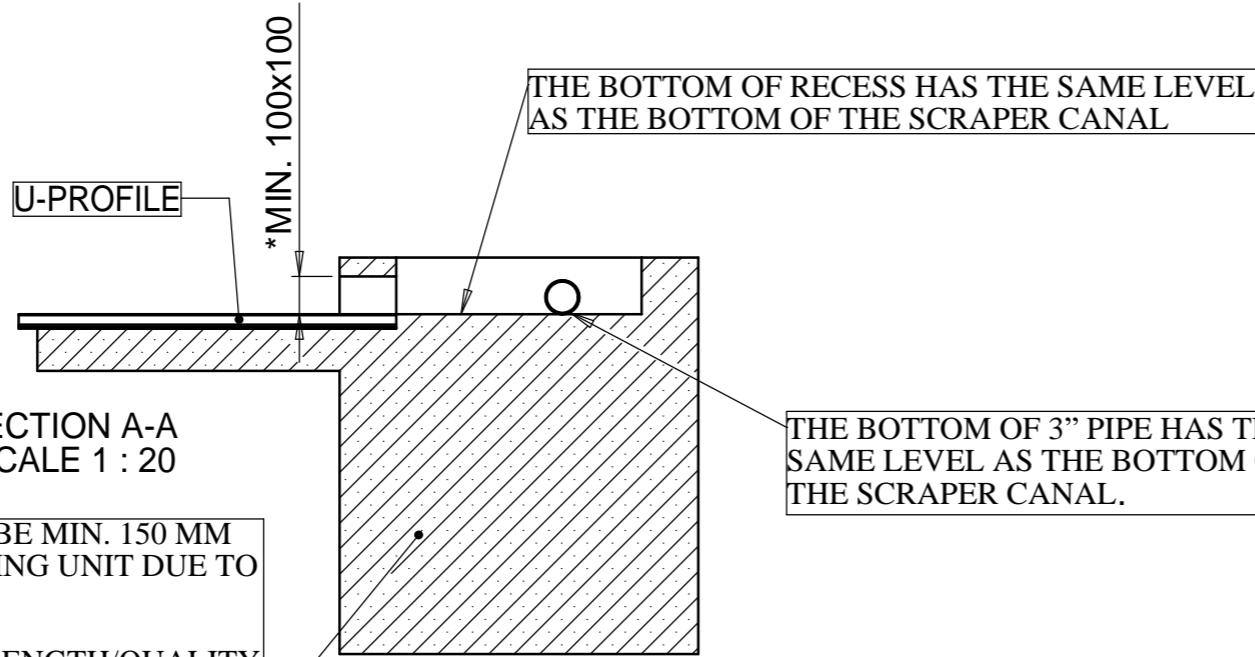


*IF THE SCRAPER'S GUIDE RAIL IS PASSING THROUGH THE HOLE TO THE RECESS, THE HOLE MUST BE MIN. 150X150 MM.

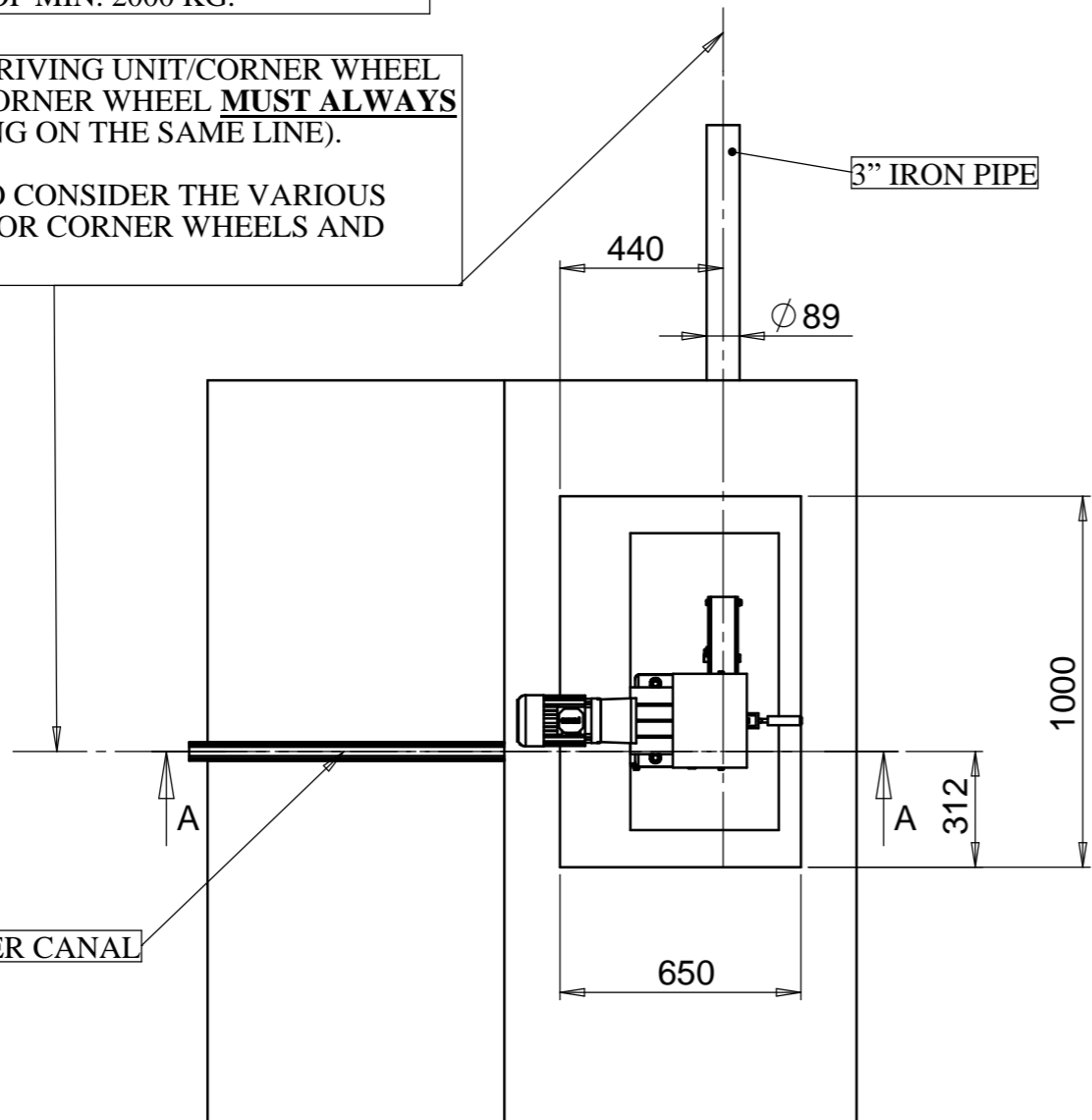


THE CONCRETE THICKNESS MUST BE MIN. 150 MM BELOW THE CORNER WHEEL/DRIVING UNIT DUE TO MOUNTING OF FIXING BOLTS.

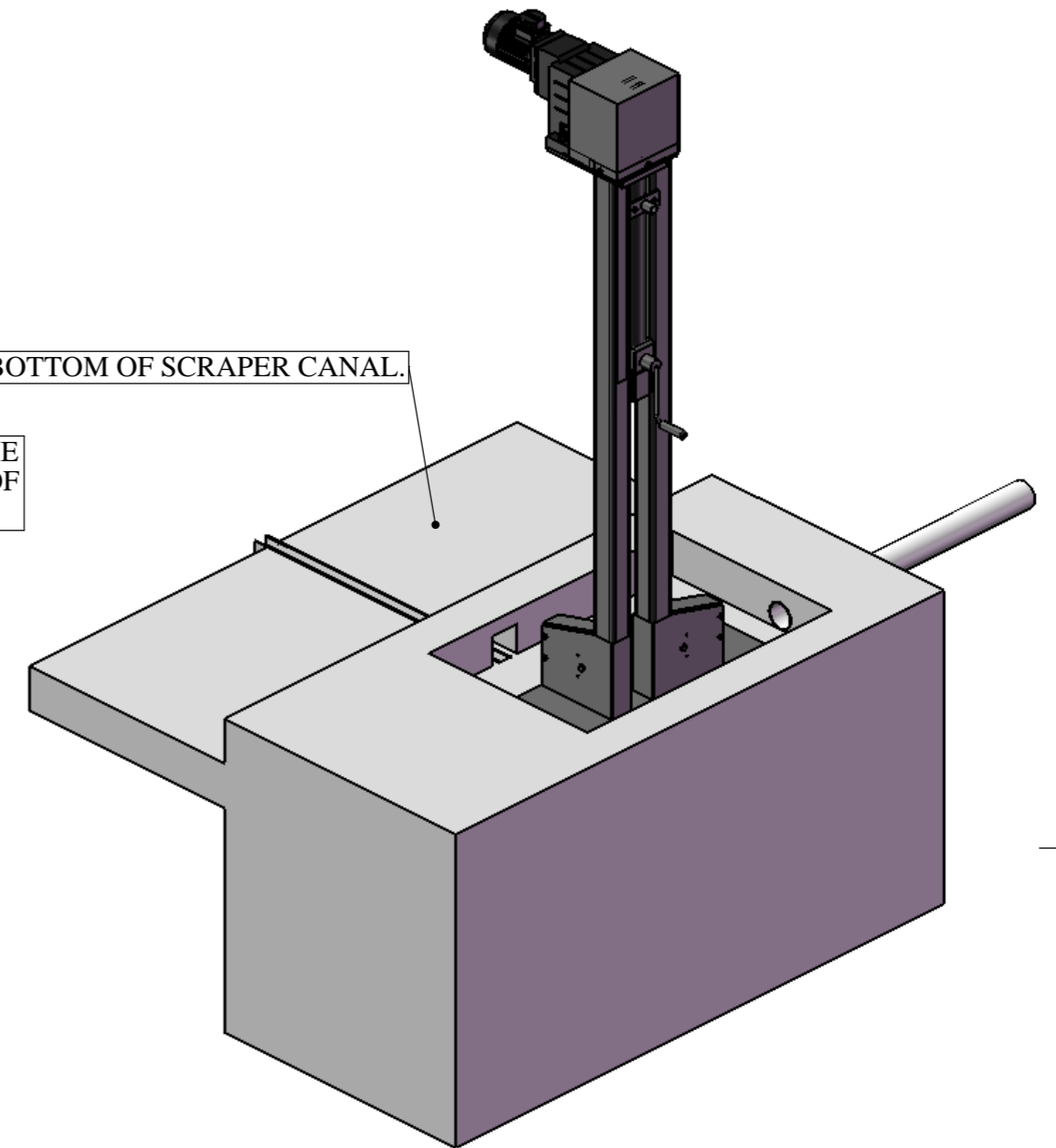
THE BASE MUST BE OF SUCH A STRENGTH/QUALITY THAT IT CAN ABSORB A PULL FROM THE CORNER WHEEL/DRIVING UNIT OF MIN. 2000 KG.

THE CHAIN BETWEEN DRIVING UNIT/CORNER WHEEL AND CORNER WHEEL/CORNER WHEEL **MUST ALWAYS** BE COLLINEAR (BE LYING ON THE SAME LINE).

ALWAYS REMEMBER TO CONSIDER THE VARIOUS RECESSED MEASURES FOR CORNER WHEELS AND DRIVING UNITS



CENTRE OF SCRAPER CANAL



GODKENDT TEGNING

Projektion	Type	Afdeling	Intialer	Dato
	P		Oprettet	AR
			Godk. af:	AR
Ikke angivet tolerancer:	Revision	Ændring		
	D	NY TEKST FOR KÆDELINIE	AR	23-04-2009
	C	TEXT FOR A MÅL TILFØJET	AR	
	B	ÆNDRET MÅL MHT. MONTAGE	AR	15-10-2008
Overfladebehandling:	A	OPRETTET	AR	10-07-2008
Alle skarpe kanter brydes				
Nettovægt: Kg				
<small>The information contained in this drawing is the sole property of STRANGKO A/S. Any reproduction in part or as a whole without the written permission of STRANGKO A/S is prohibited.</small>				

STRANGKO
A BouMatic Company

Stadionvej 16
6800 Varde
Danmark

Telefon : +45 7526 0211
Telefax : +45 7526 0396
E-mail: agro@strangko.dk
Web: www.strangko.dk

Navn:
CONCRETE/INSTALLATION DRAWING FOR DRIVING UNIT - RIGHT

TEGN.NR.
T5021702-UK

Revision
D

SCALE:1:50 SHEET 1 OF 1 A3