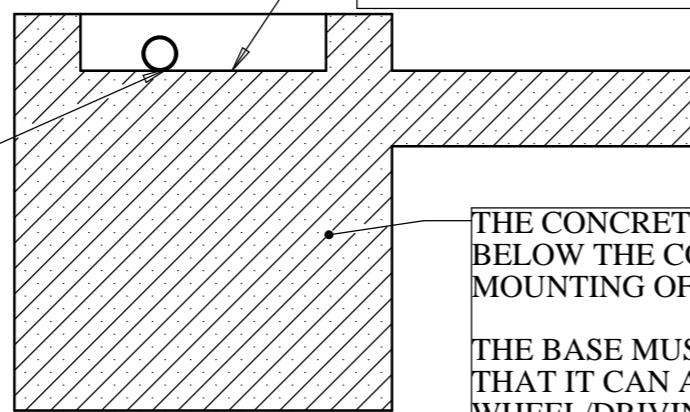


THE BOTTOM OF 3" PIPE HAS THE SAME LEVEL AS THE BOTTOM OF THE SCRAPER CANAL.

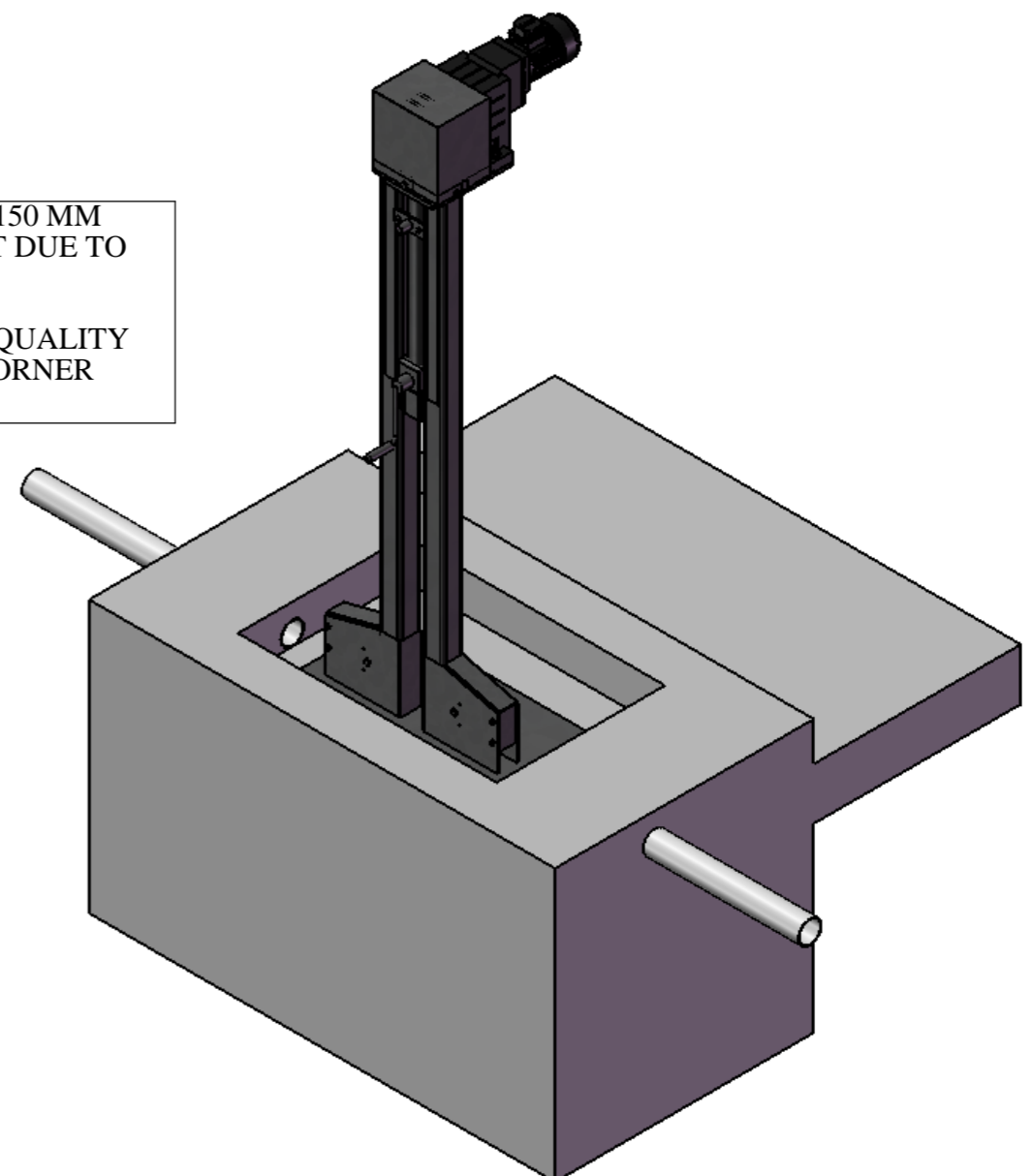
SECTION A-A

THE BOTTOM OF RECESS HAS THE SAME LEVEL AS THE BOTTOM OF THE SCRAPER CANAL.



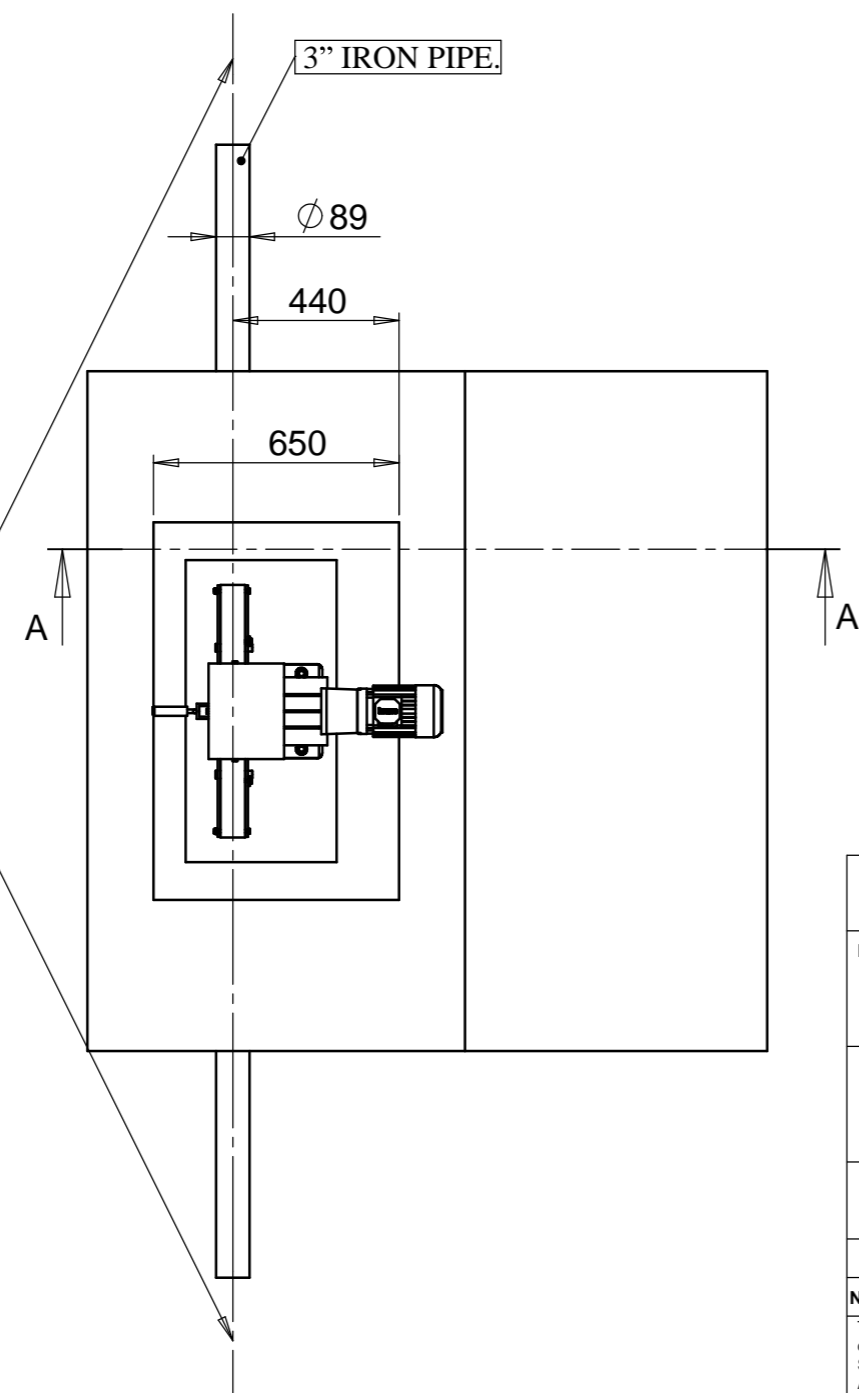
THE CONCRETE THICKNESS MUST BE MIN. 150 MM BELOW THE CORNER WHEEL/DRIVING UNIT DUE TO MOUNTING OF FIXING BOLTS.

THE BASE MUST BE OF SUCH A STRENGTH/QUALITY THAT IT CAN ABSORB A PULL FROM THE CORNER WHEEL/DRIVING UNIT OF MIN. 2000 KG.



THE CHAIN BETWEEN DRIVING UNIT/CORNER WHEEL AND CORNER WHEEL/CORNER WHEEL **MUST ALWAYS** BE COLLINEAR (BE LYING ON THE SAME LINE).

ALWAYS REMEMBER TO CONSIDER THE VARIOUS RECESSED MEASURES FOR CORNER WHEELS AND DRIVING UNITS



GODKENDT TEGNING

Projektion 	Type	Afdeling	Intialer	Dato	STRANGKO A BouMatic Company Stadionvej 16 6800 Varde Danmark Navn: CONCRETE/INSTALLATION DRAWING FOR DRIVING UNIT - STRAIGHT TEGN.NR. T5021703-UK	Telefon : +45 7526 0211 Telefax : +45 7526 0396 E-mail: agro@strangko.dk Web: www.strangko.dk
	P		Oprettet AR 10-07-2008 Godk. af: AR 23-04-2009			Revision
Ikke angivet tolerancer:	C	NY TEKST FOR KÆDELINIE	AR	23-04-2009		
Overfladebehandling:	B	TEXT FOR A MÅL TILFØJET	AR			
Alle skarpe kanter brydes	A	OPRETTET	AR	18-08-2008		
Nettovægt: 16638.99 Kg						
The information contained in this drawing is the sole property of STRANGKO A/S. Any reproduction in part or as a whole without the written permission of STRANGKO A/S is prohibited.						
SCALE:1:20					SHEET 1 OF 1	
					Revision C	
					A3	