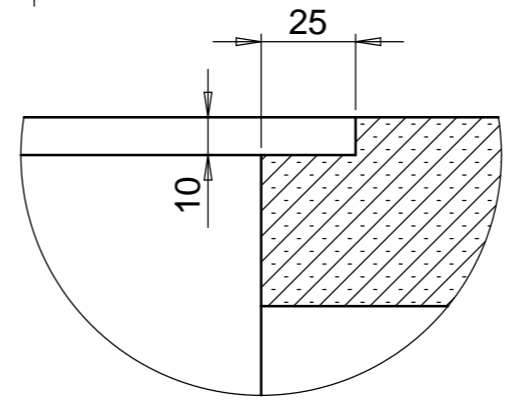
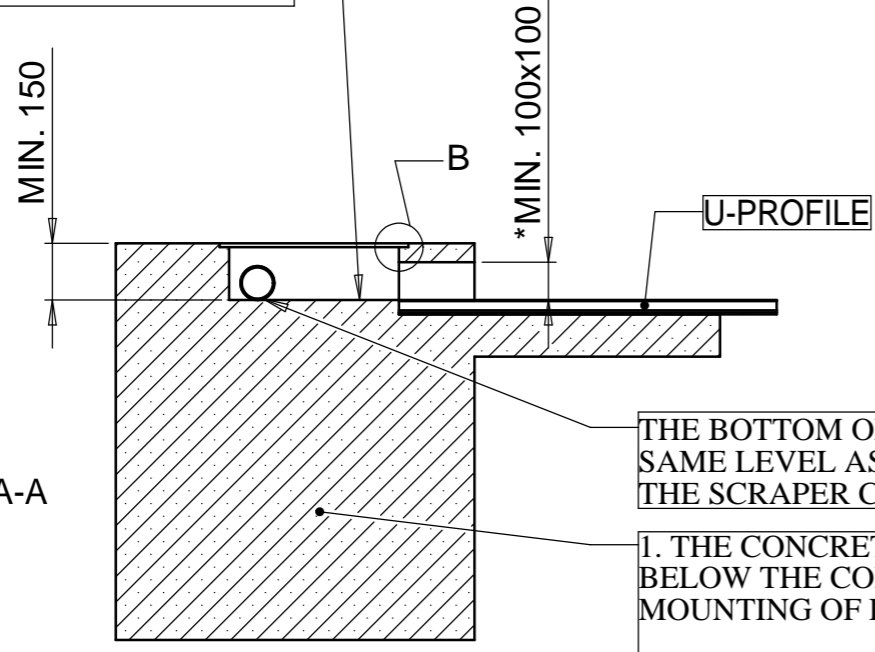


THE BOTTOM OF RECESS HAS THE SAME LEVEL AS THE BOTTOM OF THE SCRAPER CANAL.

*IF THE SCRAPER'S GUIDE RAIL IS PASSING THROUGH THE HOLE TO THE RECESS, THE HOLE MUST BE MIN. 150X150 MM.



DETAIL B
SCALE 1 : 2



SECTION A-A

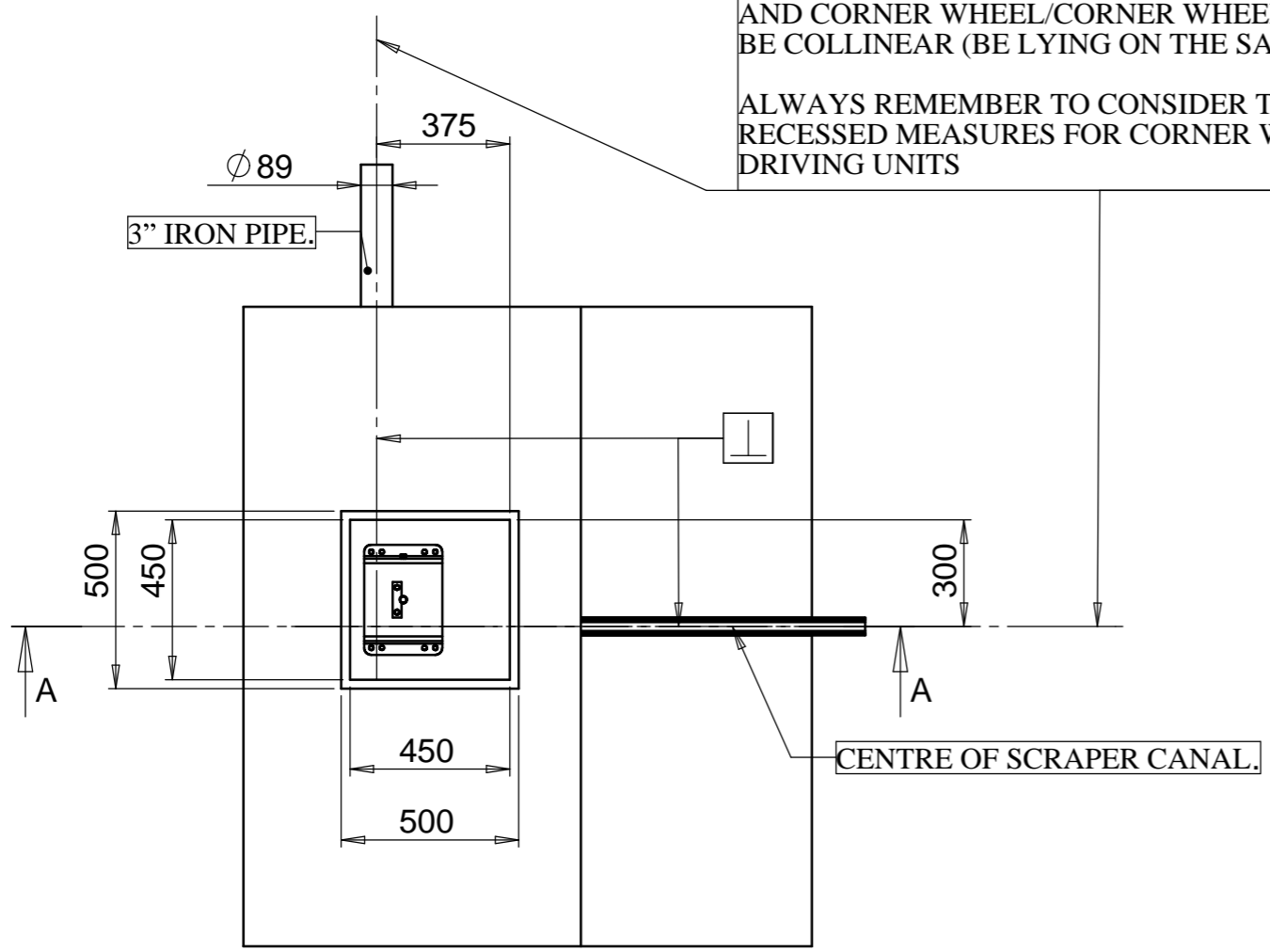
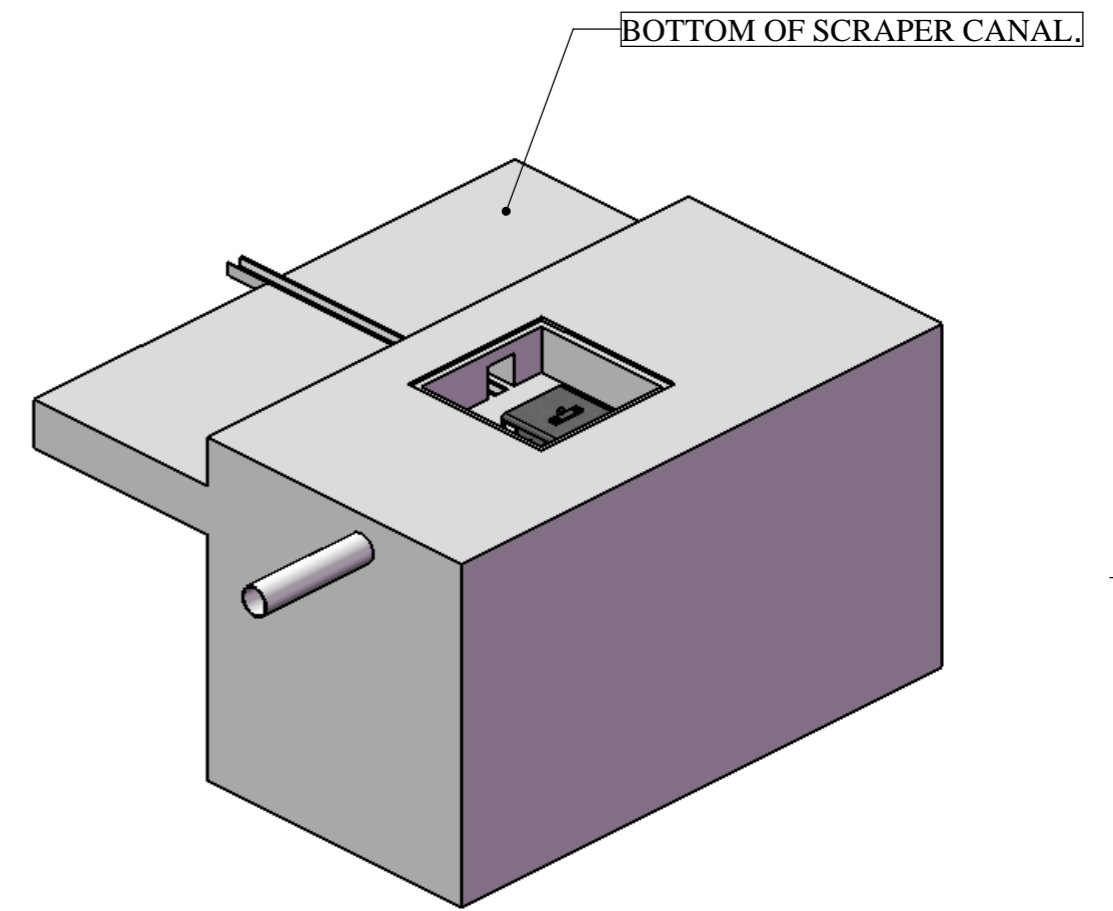
THE BOTTOM OF 3" PIPE HAS THE SAME LEVEL AS THE BOTTOM OF THE SCRAPER CANAL

1. THE CONCRETE THICKNESS MUST BE MIN. 150 MM BELOW THE CORNER WHEEL/DRIVING UNIT DUE TO MOUNTING OF FIXING BOLTS.

THE BASE MUST BE OF SUCH A STRENGTH/QUALITY THAT IT CAN ABSORB A PULL FROM THE CORNER WHEEL/DRIVING UNIT OF MIN. 2000 KG.

THE CHAIN BETWEEN DRIVING UNIT/CORNER WHEEL AND CORNER WHEEL/CORNER WHEEL **MUST ALWAYS** BE COLLINEAR (BE LYING ON THE SAME LINE).

ALWAYS REMEMBER TO CONSIDER THE VARIOUS RECESSED MEASURES FOR CORNER WHEELS AND DRIVING UNITS



GODKENDT TEGNING

Projektion 	Type	Afdeling	Intialer	Dato
	P		Oprettet AR	23-04-2009
Ikke angivet tolerancer:	Revision	Ændring		
	D	NY TEKST FOR KÆDELINIE	AR	23-04-2009
Overfladebehandling:	C	TEXT FOR A MÅL TILFØJET	AR	
	B	ÆNDRET MÅL MHT. MONTAGE	AR	15-10-2008
	A	OPRETTET	AR	10-07-2008
Alle skarpe kanter brydes				
Nettovægt: Kg				
The information contained in this drawing is the sole property of STRANGKO A/S. Any reproduction in part or as a whole without the written permission of STRANGKO A/S is prohibited.				

STRANGKO
A BouMatic Company

Stadionvej 16
6800 Varde
Danmark

Telefon : +45 7526 0211
Telefax : +45 7526 0396
E-mail: agro@strangko.dk
Web: www.strangko.dk

Navn:
CONCRETE/INSTALLATION DRAWING FOR CORNER (MOUNTED TOWARDS THE LEFT)

TEGN.NR.
T5021711-UK

Revision
D

SCALE:1:20 SHEET 1 OF 1 A3