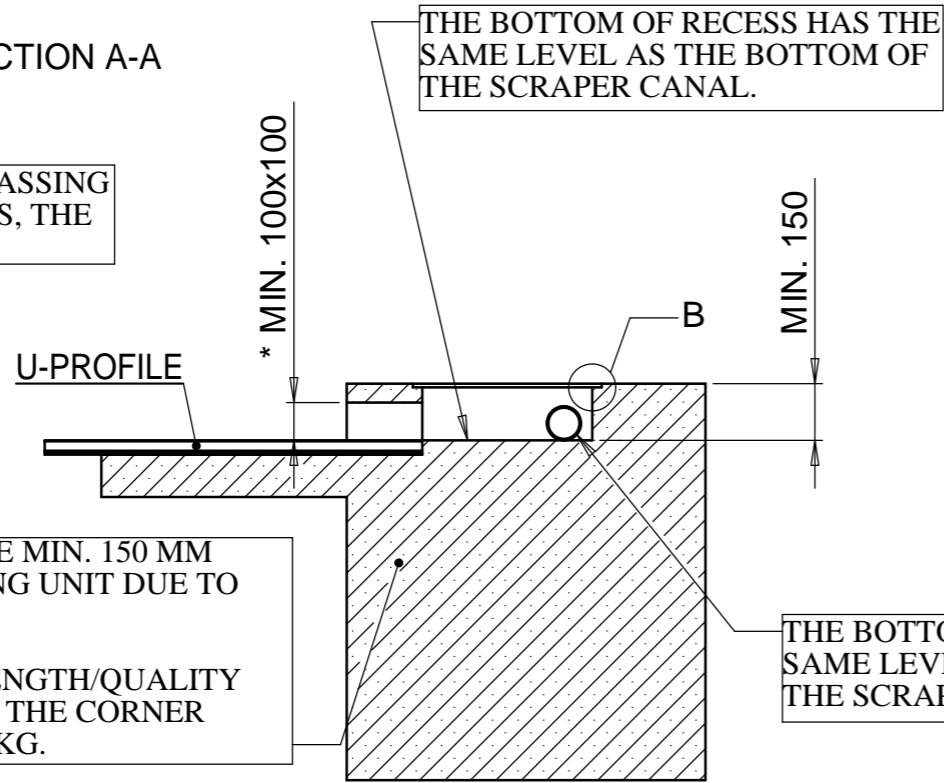


SECTION A-A

\*IF THE SCRAPER'S GUIDE RAIL IS PASSING THROUGH THE HOLE TO THE RECESS, THE HOLE MUST BE MIN. 150X150 MM.



THE CONCRETE THICKNESS MUST BE MIN. 150 MM BELOW THE CORNER WHEEL/DRIVING UNIT DUE TO MOUNTING OF FIXING BOLTS.

THE BASE MUST BE OF SUCH A STRENGTH/QUALITY THAT IT CAN ABSORB A PULL FROM THE CORNER WHEEL/DRIVING UNIT OF MIN. 2000 KG.

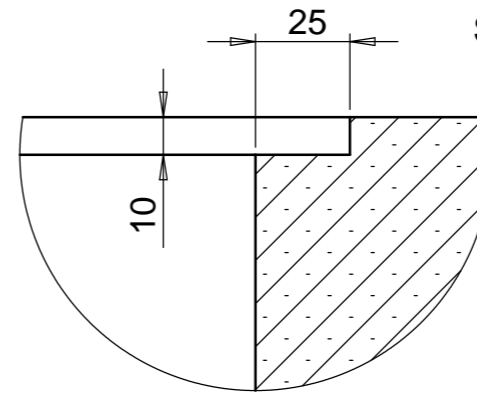
THE CHAIN BETWEEN DRIVING UNIT/CORNER WHEEL AND CORNER WHEEL/CORNER WHEEL **MUST ALWAYS** BE COLLINEAR (BE LYING ON THE SAME LINE).

ALWAYS REMEMBER TO CONSIDER THE VARIOUS RECESSED MEASURES FOR CORNER WHEELS AND DRIVING UNITS

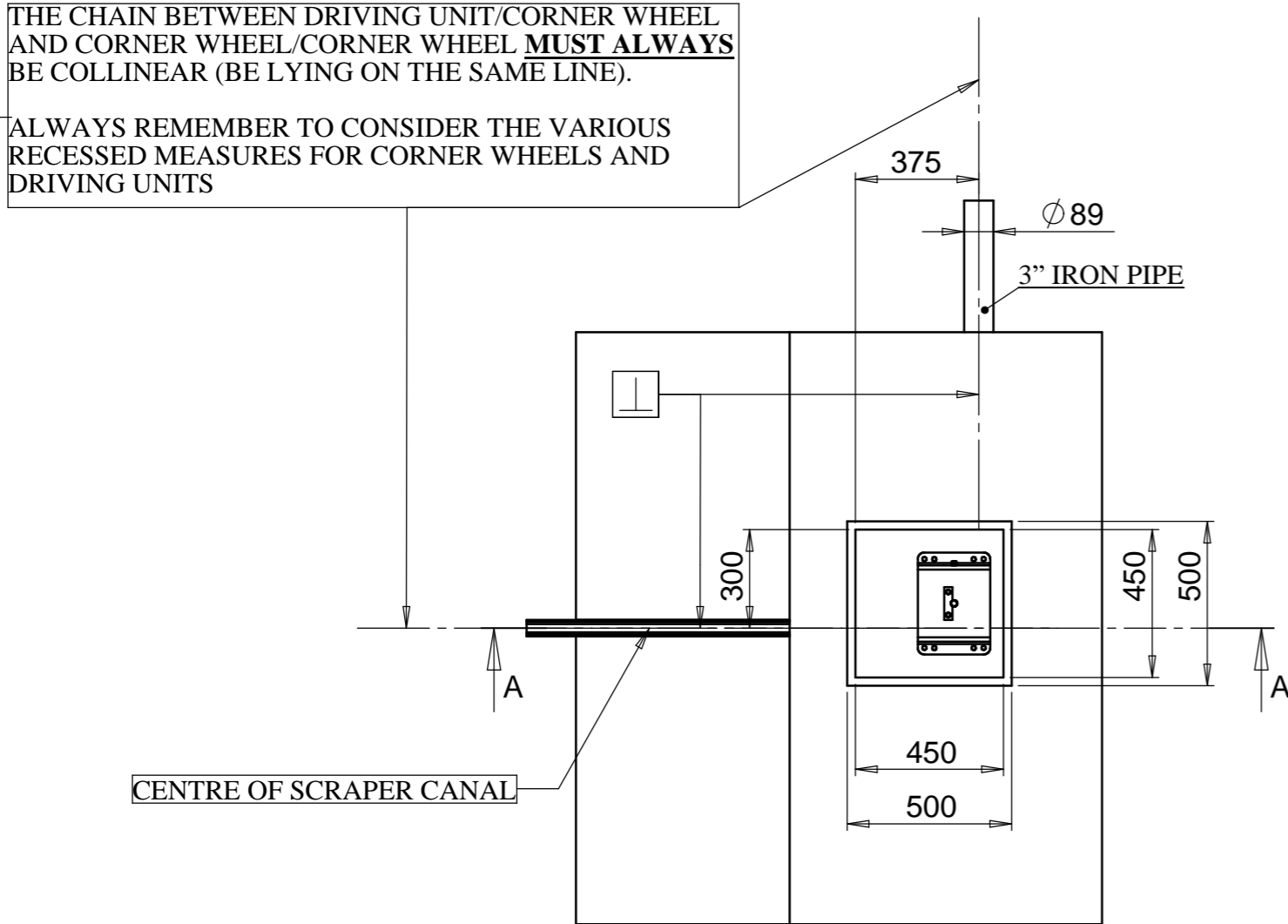
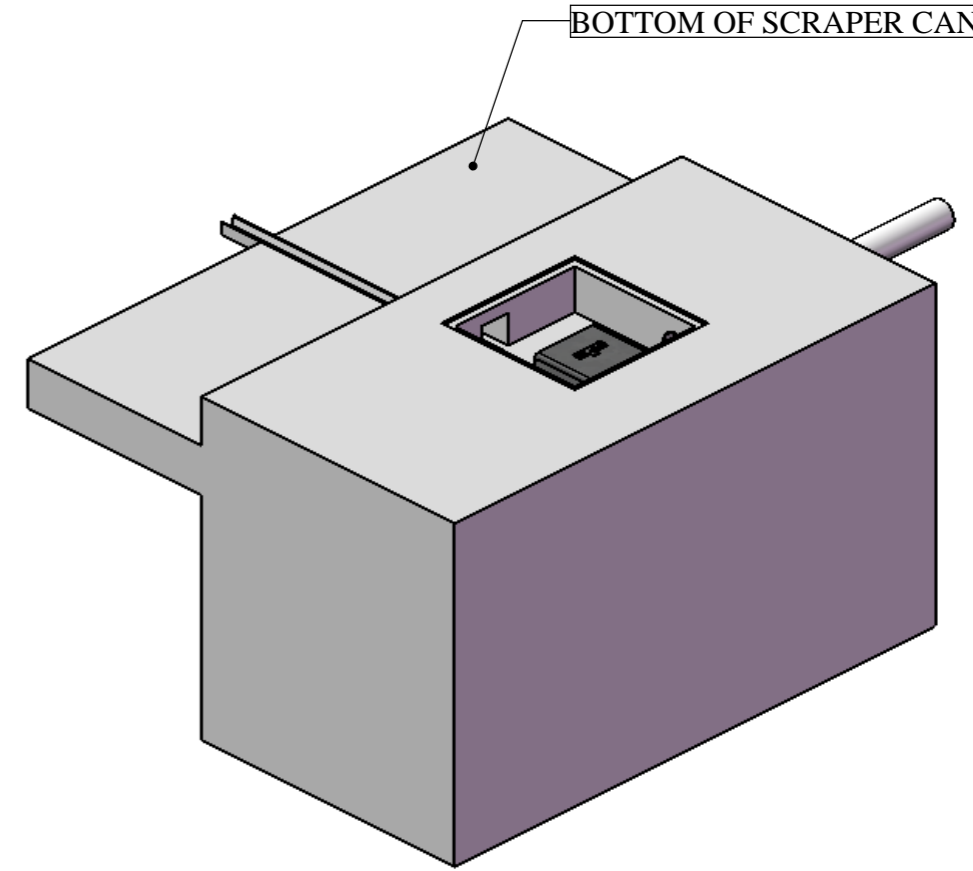
THE BOTTOM OF RECESS HAS THE SAME LEVEL AS THE BOTTOM OF THE SCRAPER CANAL.

THE BOTTOM OF 3" PIPE HAS THE SAME LEVEL AS THE BOTTOM OF THE SCRAPER CANAL

DETAIL B  
SCALE 1 : 2



BOTTOM OF SCRAPER CANAL



CENTRE OF SCRAPER CANAL

**GODKENDT TEGNING**

Projektion 	Type	Afdeling	Intialer	Dato
	P		Oprettet AR 10-07-2008 Godk. af: AR 23-04-2009	
Ikke angivet tolerancer:	Revision	Ændring		
	D	NY TEKST FOR KÆDELINIE	AR	23-04-2009
	C	TEXT FOR A MÅL TILFØJET	AR	
Overfladebehandling:	B	ÆNDRET MÅL MHT. MONTAGE	AR	15-10-2008
	A	OPRETTET	AR	10-07-2008
Alle skarpe kanter brydes				
Nettovægt: Kg				
The information contained in this drawing is the sole property of STRANGKO A/S. Any reproduction in part or as a whole without the written permission of STRANGKO A/S is prohibited.				

**STRANGKO**  
A BouMatic Company

Stadionvej 16  
6800 Varde  
Danmark

Telefon : +45 7526 0211  
Telefax : +45 7526 0396  
E-mail: agro@strangko.dk  
Web: www.strangko.dk

Navn:  
**CONCRETE/INSTALLATION DRAWING FOR CORNER (MOUNTED TOWARDS THE RIGHT).**

TEGN.NR.  
**T5021712-UK**

Revision  
**D**

SCALE:1:20 SHEET 1 OF 1 A3